



Bio21 Molecular Science and  
Biotechnology Institute

30 Flemington Road  
The University of Melbourne  
Victoria 3010 Australia

Telephone +61 3 8344 2220  
Email info-bio21@unimelb.edu.au

[www.bio21.org](http://www.bio21.org)

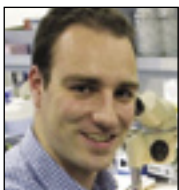
# Views of the New Generation

***At the heart of the Bio21 Institute are the resident research students and post doctoral fellows. Their numbers will exceed 200 when the Institute is at full strength. The Institute is committed to enhancing their development through creating interdisciplinary research and industry engagement opportunities***

While students are enrolled through their home disciplines, the Institute adds value through creating an environment which fosters the development of future innovators and leaders within both academia and industry,

Externally-based research students and post docs also have opportunities to benefit from the Institute's programs through participation in the extensive visitors laboratories, engaging in interdisciplinary collaborations, accessing platform technologies and know how and interacting with industry scientists and entrepreneurs.

## How they view the Institute:



*"The Bio21 Institute houses such a bewildering array of equipment and facilities that suddenly the main obstacle holding back research and innovation is your own imagination."*

**Harald Ottenhof, research fellow**



*"The Institute extends my research goals and introduces me to new approaches by fostering interdisciplinary collaborations and providing direct access to cutting edge equipment."*

**Lee Willoughby, PhD student**



*"The open plan lab environment improves communications and accessibility of colleagues, which leads to a greater flow of ideas and input into experiments and help with interpretation of results."*

**Trent Perry, PhD student**



*"Having different disciplines co-located within the institute deepens the knowledge base and resources available to improve the quality of our research."*

**Tom Harrop, B.Sc Honours student**



*"The high quality interdisciplinary environment brings me in contact with new research areas and cutting edge technologies."*

**David De Souza, PhD student**



*"The Bio21 Institute – The most fun you can have with your lab coat on."*

**Simon Baxter, PhD student**



*“The Institute environment has encouraged me to extend my interests in the commercialisation of research through interactions with its business development office and industry networks.”*

**Jarrod Belcher, PhD student**



*“The Institute’s state-of-the-art NMR and other proteomics facilities and unique collaborative environment has provided a wonderful platform for me to add value to my plant molecular biology research, through collaboration with the Institute’s functional proteomics specialists.”*

**Farzad Haerizadeh , Research Fellow**